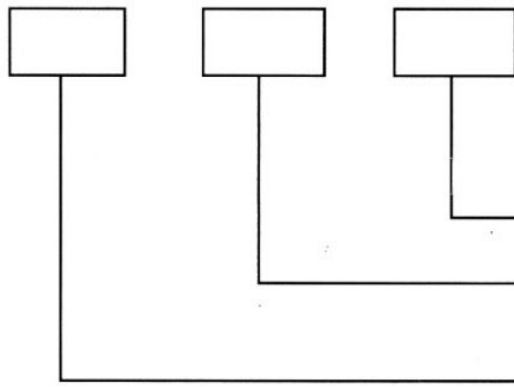


四、ZD和ZDH系列圆柱齿轮减速器

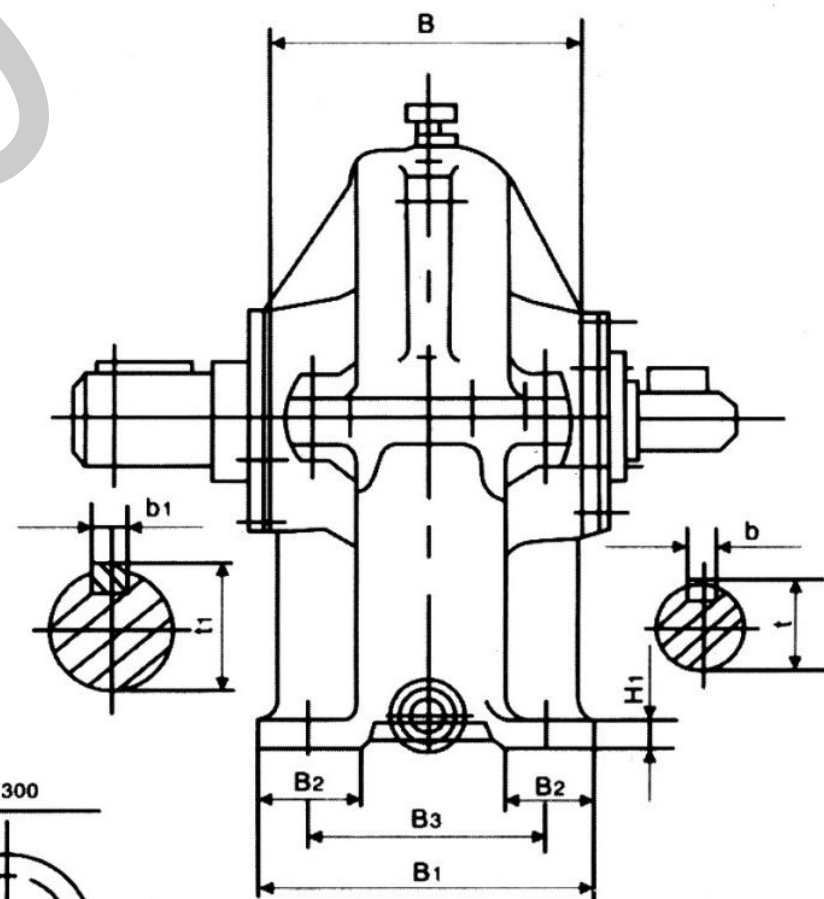
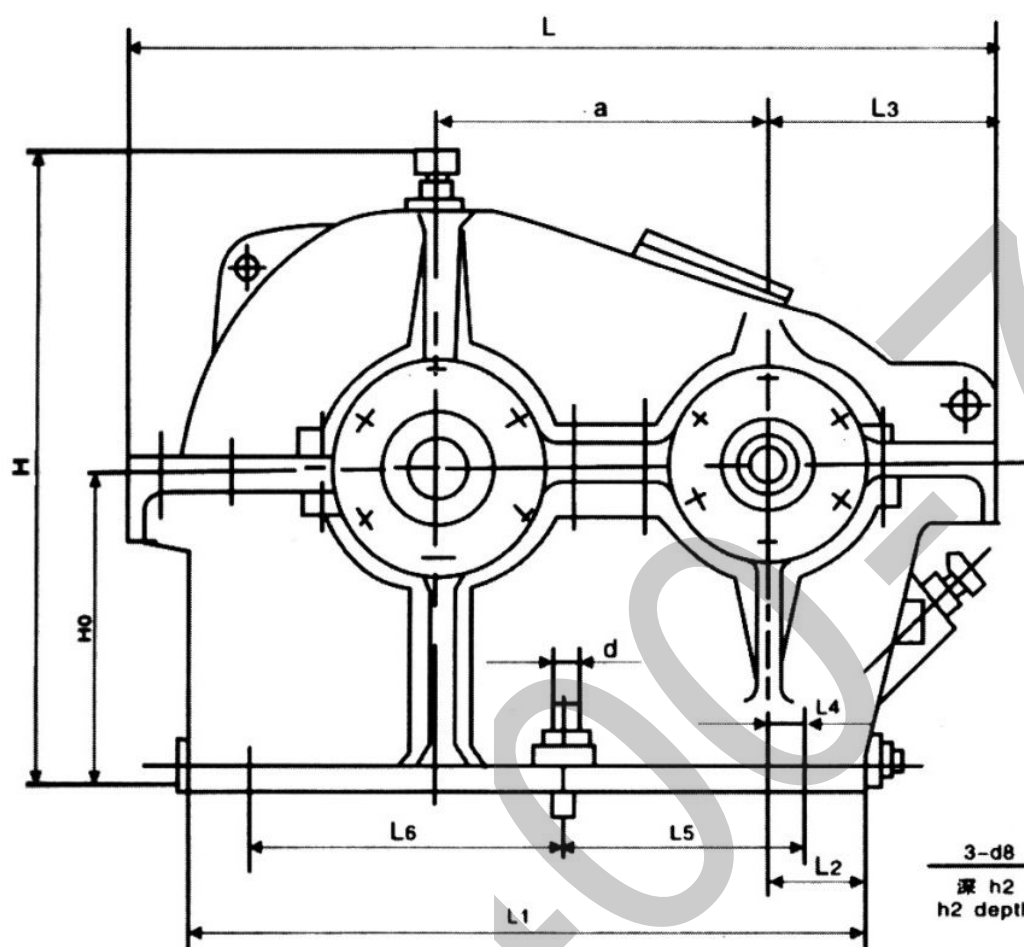
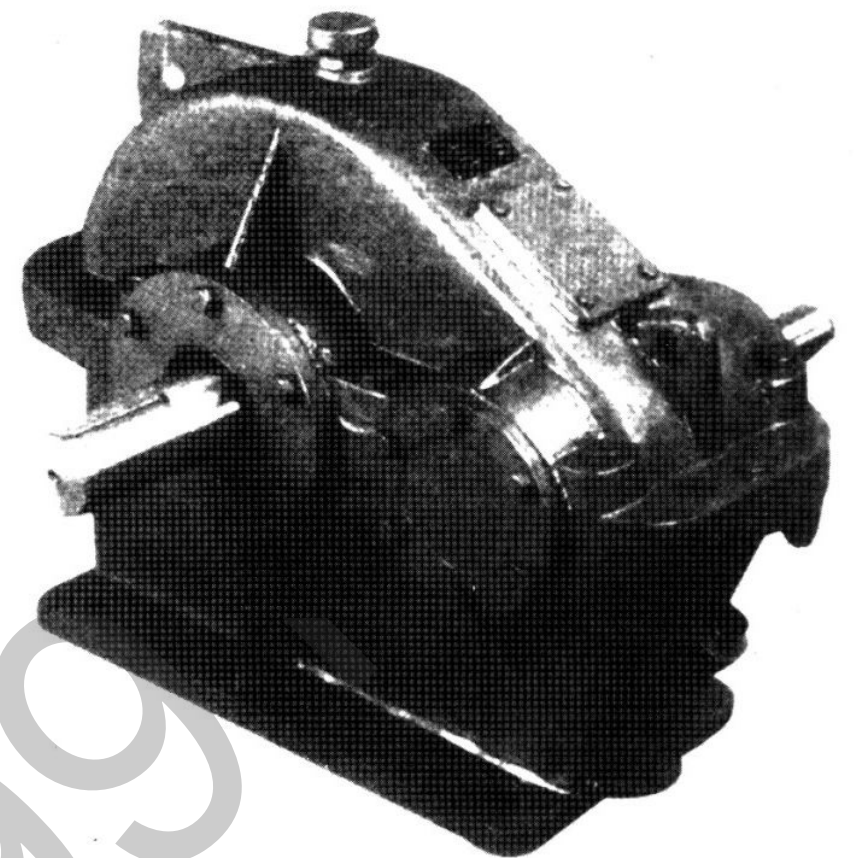
标准: JB1130—77

ZD (ZDH)

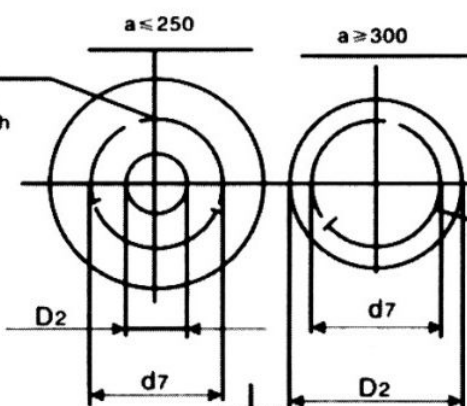


装配型式
传动比
总中心距
总中心距
减速机型号

Installing form
transmission ratio
Wholly center space
Wholly center space
Reducer type

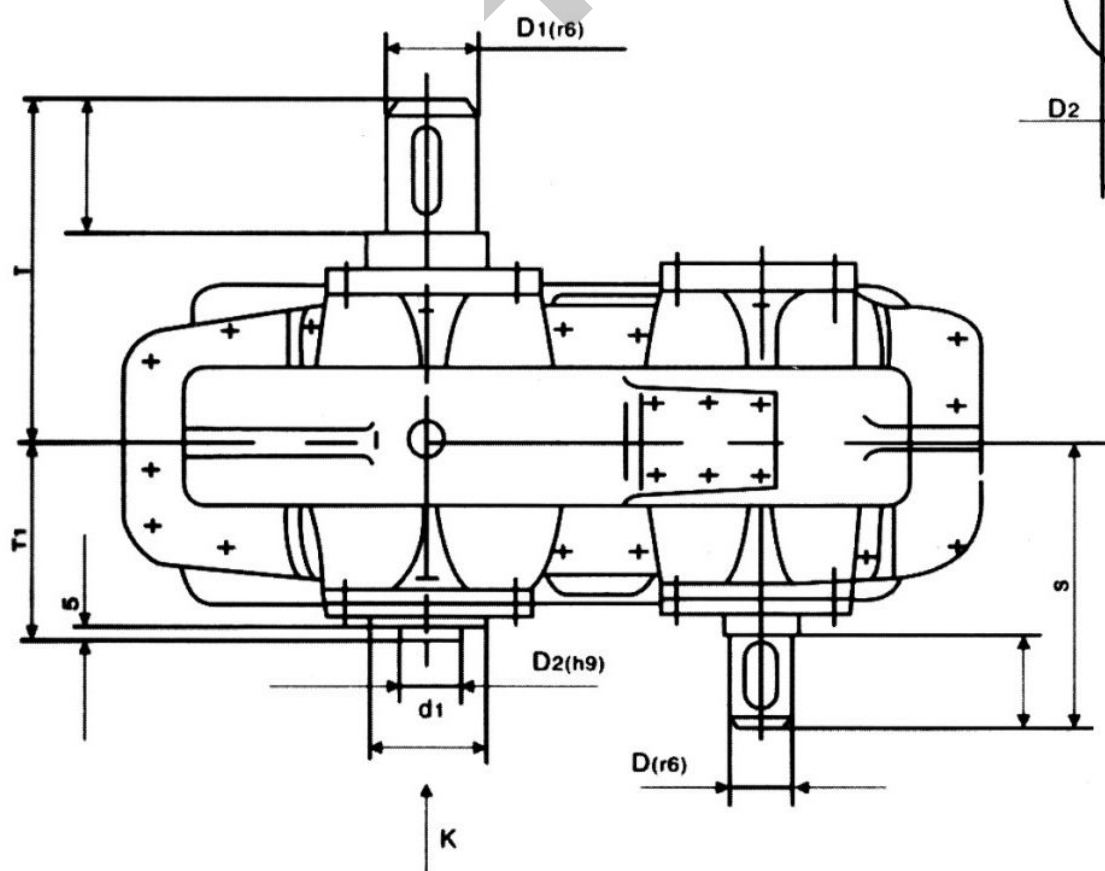
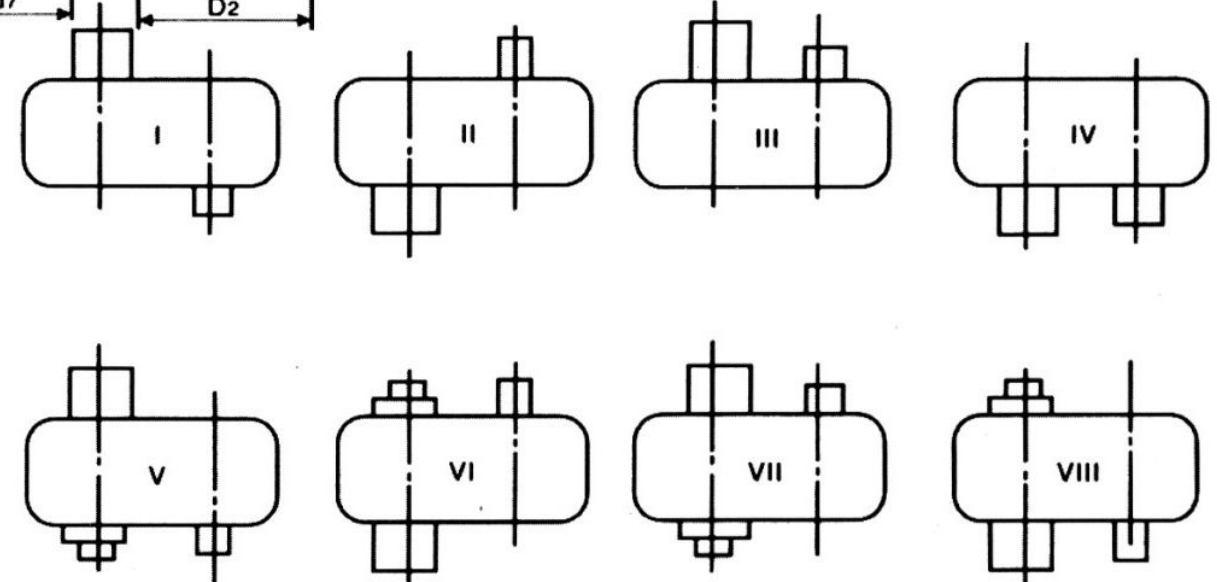


K向
K direction



3-d8
深 h2
h2 depth

装配型式
Installing form





外型及安装尺寸、装配型式

Outlook assembling size and installing form

型号 type			中心距 center space	中心离 center height	轮廓尺寸 axle size			B ₁	B ₂	L ₁	L ₂	L ₃	H ₁	地脚螺钉 lower margin scraw					
			a	H ₀	H	L	B							d	n	B ₃	L ₄	L ₅	L ₆
ZDH10	ZD10		100	⁰ _{130-0.5}	240	335	140	150	48	245	35	95	16	M16	4	110	10	—	195
ZDH15	ZD15		150	⁰ _{200-0.5}	355	450	210	220	70	340	35	110	20			160		80	200
ZDH20	ZD20		200	⁰ _{250-0.5}	493	575	250	250	80	440	45	145	20			170		130	220
ZDH25	ZD25		250	⁰ _{300-0.5}	593	710	270	290	90	545	50	165	25	M20		210	160	295	
ZDH30	ZD30		300	⁰ _{350-0.5}	683	835	300	320	100	650	64	195	30	M24	6	240	20	205	350
ZDH35	ZD35		350	⁰ _{400-0.5}	778	955	350	360	110	750	68	215	30			280		250	400
ZDH40	ZD40	6M	400	⁰ _{450-0.5}	878	1085	390	400	120	850	67	240	32	M30		310		280	470
		8M			820	1050	410	410		940	170	225	35			320	120	325	460
ZDH45	ZD45		450	⁰ _{500-0.5}	973	1210	430	450	130	970	92	265	40	M36	6	340	35	325	525
ZDH50	ZD50		500	⁰ _{550-0.5}	1106	1320	470	500	140	1070	97	275	40			390	40	355	600
ZDH60	ZD60		600	⁰ _{650-1.0}	1301	1550	540	540	145	1265	97	310	45			430		440	700
ZDH70	ZD70		700	⁰ _{750-1.0}	1496	1820	580	610	150	1490	128	370	52	M42		500	65	550	790
ZDH80	ZD80		800	⁰ _{835-1.0}	1653	2041	620	650	150	1715	163	405	54	M48	545	650		860	

型号 type			高速轴 high – speed axle				S	低速轴 low – speed axle				T	T ₁	d ₁	D ₂	d ₇	d ₈	h ₂	重量kg weight
			l	D	b	t		l ₁	D ₁	b ₁	t ₁								
ZDH10	ZD10		55	25	8	27.5	155	55	30	8	32.5	155	95	35	14	24	M6	15	32
ZDH15	ZD15		55	30	8	32.5	210	70	40	12	42.8	225	135	45	25	35			85
ZDH20	ZD20		70	40	12	42.5	255	85	55	16	58.5	270	160	60		40			155
ZDH25	ZD25		85	50	16	53.5	280	105	70	20	74.5	315	170	75		260			
ZDH30	ZD30		105	60	18	63.5	315	115	85	24	90.0	340	185	95	75	55	M8	20	375
ZDH35	ZD35		105	70	20	74.2	355	125	100	28	105.7	380	215	110					530
ZDH40	ZD40	6M	125	80	24	85	400	140	110	32	116.5	415	255	120					735
		8M	124					165				450	400						
ZDH45	ZD45		140	90	24	95	435	165	130	36	137.2	470	255	140					950
ZDH50	ZD50		160	100	28	105.7	475	180	140	36	147.2	500	275	150					1345
ZDH60	ZD60		165	120	32	126.5	515	200	170	40	178.5	570	310	180					1915
ZDH70	ZD70		180	140	36	148	580	240	200	45	210	630	335	220					2700
ZDH80	ZD80		180	140	36	148	600	240	200	45	210	650	355	200					3500

ZD(H)减速器的传动比

Transmission ratio of ZD(H) reducer

传动比代号 No of transmission ratio	1	2	3	4	5	6	7	8	9	10	11
i	2	2.24	2.5	2.8	3.15	3.55	4	4.5	5	5.6	6.3



承载能力表
Bearing capacity

型号Type		ZD 10		ZD 15		ZD 20		ZD 25		ZD 30		ZD 35		ZD 40		ZD 45		ZD 50		ZD 60		ZD 70	
工作类型 service type	电机转速 Motor rotate speed	中型 mi- ddle sized	连续 con- tinu- ed	中型 mi- ddle sized	连续 con- tinu- ed	中型 mi- ddle sized	连续 con- tinu- ed	中型 mi- ddle sized	连续 con- tinu- ed	中型 mi- ddle sized	连续 con- tinu- ed	中型 mi- ddle sized	连续 con- tinu- ed	中型 mi- ddle sized	连续 con- tinu- ed	中型 mi- ddle sized	连续 con- tinu- ed	中型 mi- ddle sized	连续 con- tinu- ed	中型 mi- ddle sized	连续 con- tinu- ed	中型 mi- ddle sized	连续 con- tinu- ed
		speed ratio	speed ratio	speed ratio	speed ratio	speed ratio	speed ratio	speed ratio	speed ratio	speed ratio	speed ratio	speed ratio	speed ratio	speed ratio	speed ratio	speed ratio	speed ratio	speed ratio	speed ratio	speed ratio	speed ratio	speed ratio	speed ratio
2	1000	8.91	7.23	29.2	23.7	67.5	54.7	128	104	216	175	365	296	530	430	736	597	984	798	-	-	-	-
	1500	11.7	10.5	38.1	34.2	86.8	77.9	178	160	295	265	-	-	-	-	-	-	-	-	-	-	-	-
2.24	1000	8.07	6.53	26.5	21.5	61.3	49.6	117	94.6	197	160	306	248	485	393	675	546	904	731	-	-	-	-
	1500	10.7	9.43	34.6	30.7	79.2	70.1	163	144	271	240	415	368	-	-	-	-	-	-	-	-	-	-
2.5	1000	7.26	5.88	23.9	19.4	55.4	44.8	106	85.6	179	145	278	225	406	328	615	498	825	667	1370	1100	-	-
	1500	9.61	8.40	31.3	27.4	71.8	62.7	136	119	247	216	379	331	548	479	-	-	-	-	-	-	-	-
2.8	1000	6.47	5.23	21.4	17.3	49.5	40.1	94.7	76.4	160	130	249	202	365	295	555	448	745	602	1240	1000	-	-
	1500	8.58	7.39	28.0	24.1	64.4	55.5	122	105	223	192	343	295	497	428	-	-	-	-	-	-	-	-
3.15	1000	5.69	4.56	18.8	15.1	43.7	35.0	83.8	67.1	142	114	221	177	324	260	453	363	665	532	1100	886	1690	1360
	1500	7.56	6.45	24.8	21.1	57.0	48.6	108	92.3	182	155	306	261	444	379	615	525	-	-	-	-	-	-
3.55	1000	4.96	3.91	16.4	13.0	38.2	30.2	73.3	57.9	124	98.2	194	153	285	225	399	315	538	425	979	772	1500	1190
	1500	6.60	5.62	21.7	18.5	50.0	42.6	95.1	81.0	160	137	270	230	393	335	546	165	730	622	-	-	-	-
4	1000	4.29	3.33	14.2	11.1	33.2	25.8	63.7	49.5	108	84.2	169	132	249	193	349	271	471	366	860	668	1320	1030
	1500	5.71	4.86	18.8	16.0	43.5	37.0	82.9	70.6	140	119	217	185	345	294	480	409	643	548	-	-	-	-
4.5	1000	3.58	2.76	11.9	9.18	27.8	21.4	53.4	41.2	90.9	70.2	142	110	209	162	294	227	397	307	668	516	1120	867
	1500	4.78	4.08	15.8	13.4	36.5	31.2	69.7	59.5	118	101	183	157	268	229	407	348	547	467	9.6	773	-	-
5	1000	3.11	2.37	10.4	7.89	24.2	18.4	46.6	35.5	79.4	60.5	124	948	183	140	258	196	349	266	587	447	990	775
	1500	4.16	3.51	13.7	11.6	31.9	26.9	61.1	51.5	103	87.2	161	136	236	199	330	278	483	407	802	677	-	-
5.6	1000	2.51	1.92	8.37	6.38	19.6	14.9	37.8	28.8	64.4	49.1	101	77.1	149	114	210	160	284	217	479	366	744	567
	1500	3.36	2.84	11.1	9.39	25.9	21.8	49.6	41.9	84.2	71.0	131	111	192	162	269	227	333	307	660	557	1010	854
6.3	1000	2.13	1.60	7.09	5.33	16.6	12.5	32.1	24.1	54.8	41.1	86.0	64.6	127	95.4	179	134	243	182	410	308	638	497
	1500	2.85	2.37	9.44	7.85	22.0	18.3	42.2	35.1	71.8	59.7	112	93.2	165	137	231	192	312	259	568	472	874	726

本表仅列出在两种不同的输入转数及工作类型的情况下，减速器高速轴的许用功率，其它转数、类型、负荷性质可近似地参考此表，但要注意，当每一循环的工作时间 $t_{\text{工作}} > 20$ 分钟时，应按连续型选用，有尖峰载荷的，要选比连续型大2—3.5倍。

This table lists allowable power for decelerator high-speed under 2 different of input revolution as well as service types. Other number of turns, type, and nature of load may refer to this list. However, if service time of each circulation is $t_{\text{service}} > 20\text{min}$, selection should be made according to continuous type, if peak load is applicable, the value 2-3.5 times bigger than that of continuous type should be selected.